



## 621/622 SERIES

- Vacuum and compound ranges through 0 psig to 15,000 psig; absolute ranges from 0 psia to 15 psia through 0 psia to 100 psia
- Current and voltage outputs available
- 316 Stainless Steel and Elgiloy wetted parts
- CE compliant to suppress RFI, EMI and ESD
- NACE MR0175/ISO 15156 compliant
- NSI/ISA-12.27.01-2003 approved single seal

### APPLICATIONS

- Chemical processing
- Gas pressure measurement
- Oil field & offshore
- Mining
- Well head measurement

**NOSHOK 621 and 622 Series transmitters are Factory Mutual and Canadian Standards Association approved for use in hazardous location applications as follows:**

Explosion-proof with entity approved for: Class I, Division 1, Groups A, B, C and D. Dust Ignition-proof with entity approval for class II/III, Division 1, Groups E, F and G. Maximum electrical ratings 30V, 20 mA.

CE compliant with pressure equipment directive 2014/68/EU. ANSI/ISA-12.27.01, Approved single seal.

### SPECIFICATIONS

<b>Output signals</b>	4 mA to 20 mA, 2-wire; 1 Vdc to 5 Vdc, 3-wire; 0.5 Vdc to 4.5 Vdc, 3-wire
<b>Pressure ranges</b>	Vacuum through 0 psi to 15,000 psi Absolute from 0 psia to 15 psia through 0 psia to 100 psia
<b>Accuracy</b>	±0.25% full scale (BFSL) (Includes the effects of non-linearity, hysteresis, non-repeatability, zero point and full scale errors)
<b>Stability</b>	≤±0.2% full scale for 1 year, non-accumulating
<b>Response time</b>	≤1 ms (between 10% and 90% full scale)
<b>Service life</b>	>100,000,000 load cycles
<b>Temperature ranges</b>	Compensated 32 °F to 176 °F (0 °C to 80 °C) Zero effect ±0.011% full scale/ °F Span effect ±0.011% full scale/ °F
<b>Media</b>	T6: -40 °F to 131 °F (-40 °C to 55 °C) T5: -40 °F to 158 °F (-40 °C to 70 °C) T4: -40 °F to 212 °F (-40 °C to 100 °C)
<b>Ambient</b>	T6: -40 °F to 140 °F (-40 °C to 60 °C) T5: -40 °F to 167 °F (-40 °C to 75 °C) T4: -40 °F to 221 °F (-40 °C to 105 °C)
<b>Storage</b>	-40 °F to 221 °F (-40 °C to 105 °C)
<b>Power requirement*</b>	10 Vdc to 30 Vdc (4 mA to 20 mA, 2-wire) 6 Vdc to 30 Vdc (1 Vdc to 5 Vdc, 3-wire) 5 Vdc to 30 Vdc (0.5 Vdc to 4.5 Vdc, 3-wire) 14 Vdc to 30 Vdc (0 Vdc to 10 Vdc, 3-wire)
<b>Load limitations</b>	≤ (VPower-10)/0.020 Amp for 4 mA to 20 mA ≥ 10,000 Ω for 1 Vdc to 5 Vdc, 3-wire
<b>Proof pressure</b>	3 times full scale for ranges 0 psi to 15 psi through 0 psi to 200 psi 1.75 times full scale for ranges 0 psi to 300 psi through 0 psi to 10,000 psi 1.5 times full scale for 0 psi to 15,000 psi
<b>Burst pressure</b>	3.8 times full scale for ranges 0 psi to 15 psi through 0 psi to 200 psi 4 times full scale for ranges 0 psi to 300 psi through 0 psi to 10,000 psi 3 times full scale for 0 psi to 15,000 psi
<b>Measuring element</b>	621 Series is 316 Stainless Steel for ranges up through 0 psi to 300 psi, 316 Stainless Steel with Elgiloy ranges 0 psig to 500 psig and higher; 622 Series is 316 Stainless Steel with NBR o-ring; (FKM o-ring optional)
<b>Connection</b>	316 Stainless Steel
<b>Housing material</b>	316 Stainless Steel
<b>Environmental rating</b>	IP67
<b>Electromagnetic rating</b>	CE compliant to EMC norm EN 61326:2014/A1:1998 RFI, EMI and ESD protection
<b>Electrical protection</b>	Reverse polarity, over-voltage and short circuit protected
<b>Shock</b>	1,000 g's according to IEC 60068-2-27
<b>Vibration</b>	20 g's according to IEC 60068-2-6
<b>Weight</b>	Approximately 12 oz.

\* Unregulated



**WARNING:** This product can expose you to chemicals including Nickel, which is known to the State of California to cause cancer and birth defects or other reproductive harm. For more information go to [www.P65Warnings.ca.gov](http://www.P65Warnings.ca.gov)

ORDERING INFORMATION				
SERIES	621 Stainless Steel threaded connection	622 316 Stainless Steel flush diaphragm	622H Hastelloy C flush diaphragm	
<b>PRESSURE RANGES</b>	<b>30vac</b> -30 inHg to 0 psig	<b>5</b> 0 psig to 5 psig	<b>300</b> 0 psig to 300 psig	<b>6000</b> 0 psig to 6,000 psig
	<b>30/30</b> -30 inHg to 30 psig	<b>10</b> 0 psig to 10 psig	<b>500</b> 0 psig to 500 psig	<b>8000</b> 0 psig to 8,000 psig
	<b>30/60</b> -30 inHg to 60 psig	<b>15</b> 0 psig to 15 psig	<b>1000</b> 0 psig to 1,000 psig	<b>10000</b> 0 psig to 10,000 psig
	<b>30/100</b> -30 inHg to 100 psig	<b>30</b> 0 psig to 30 psig	<b>1500</b> 0 psig to 1,500 psig	<b>15000</b> 0 psig to 15,000 psig
	<b>30/160</b> -30 inHg to 160 psig	<b>60</b> 0 psig to 60 psig	<b>2000</b> 0 psig to 2,000 psig	<b>15A</b> 0 psia to 15 psia
	<b>30/200</b> -30 inHg to 200 psig	<b>100</b> 0 psig to 100 psig	<b>3000</b> 0 psig to 3,000 psig	<b>100A</b> 0 psia to 100 psia
	<b>30/300</b> -30 inHg to 300 psig	<b>200</b> 0 psig to 200 psig	<b>5000</b> 0 psig to 5,000 psig	
	psig = gauge pressure    psia = absolute pressure	Other ranges available on request	<b>Note:</b> 622 Series is available for pressure ranges up to 0 psig to 8,000 psig	
<b>ACCURACY</b>	1 ±0.25% full scale (BFSL)			
<b>OUTPUT SIGNALS</b>	1 4 mA to 20 mA, 2-wire	3 1 Vdc to 5 Vdc, 3-wire, low power	31 0.5 Vdc to 4.5 Vdc 3-wire, low power	
	2 0 Vdc to 5 Vdc, 3-wire	5 0 Vdc to 10 Vdc, 3-wire		
<b>PROCESS CONNECTIONS</b>	2 1/4" NPT male	11 G 1/2 B *		
	8 1/2" NPT male	13 G 1 B (622 Series only, <30 psig)		
<b>ELECTRICAL CONNECTIONS</b>	6 1/2" NPT male conduit with 6' integral cable		37 1/2" NPT male conduit with 6' flying leads with epoxy seal	
<b>OPTIONS</b>	ST8 Threaded Orifice (621 Series only)	20 20' Cable/lead (attached to electrical connection 6 or 37)	30 30' Cable/lead (attached to electrical connection 6 or 37)	

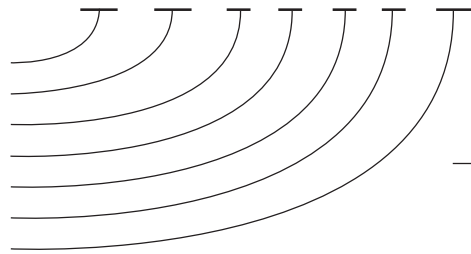
Please consult your local NOSHOK Distributor or NOSHOK, Inc. for availability and delivery information.

\* 621 series G1/2B, 622 Series G 1/2 B Flush (≥30 psig).

### EXAMPLE

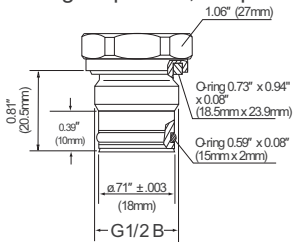
Series ..... 621 Series  
 Pressure range ..... 0 psig to 500 psig  
 Accuracy ..... ±0.25% full scale (BFSL)  
 Output signal ..... 4 mA to 20 mA, 2-wire  
 Process connection ..... 1/2" NPT Male  
 Electrical connection ..... 1/2" NPT Male conduit with 6' integral cable  
 Option ..... Threaded Orifice

621 - 500 - 1 - 1 - 8 - 6 - ST8

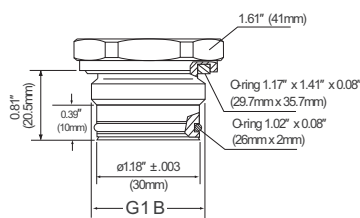


### Front flush process connections

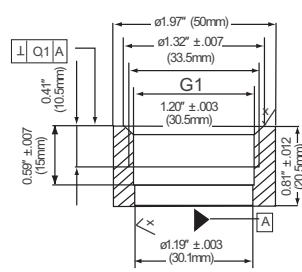
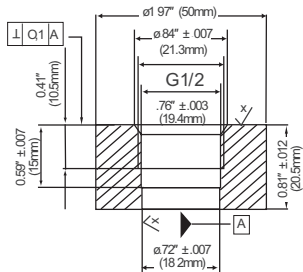
For ranges 0 psi to 30 psi through 0 psi to 8,000 psi



For ranges 0 to 30 psi and below



### Flush corresponding port weld-on adapters



### 2-WIRE WIRING

V+	Red
V-	Black
Ground	Gray

### 3-WIRE WIRING

V+	Red
Common	Black
Output	Brown
Ground	Gray